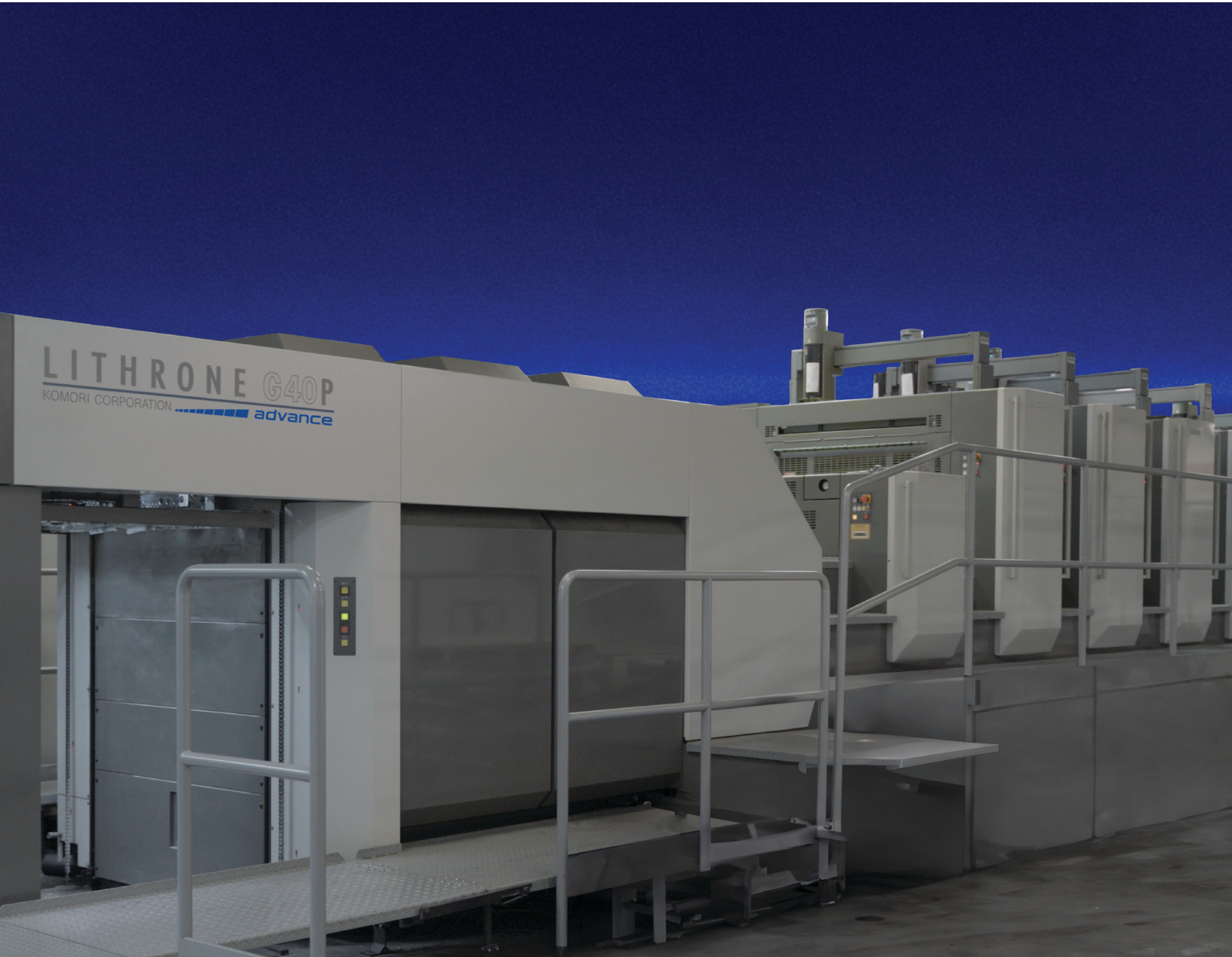
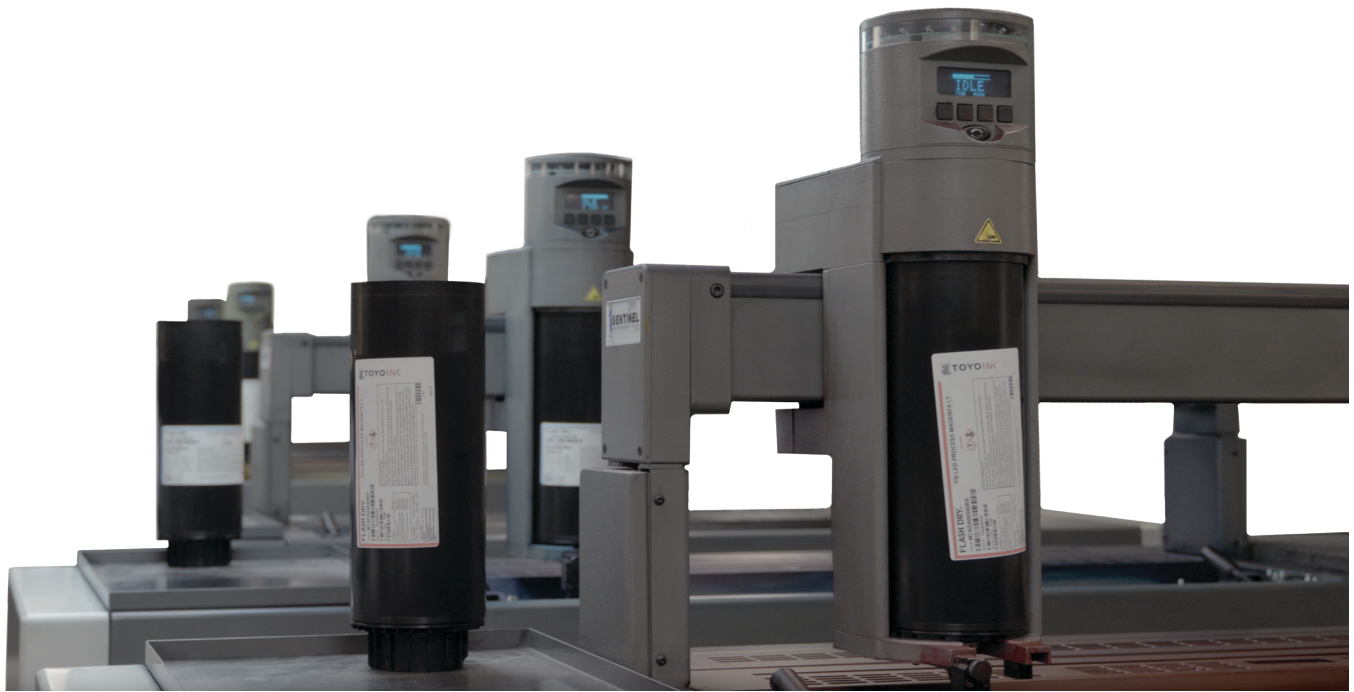


The perfect compliment  
to an already great press.  
**Sentinel Ink Management**



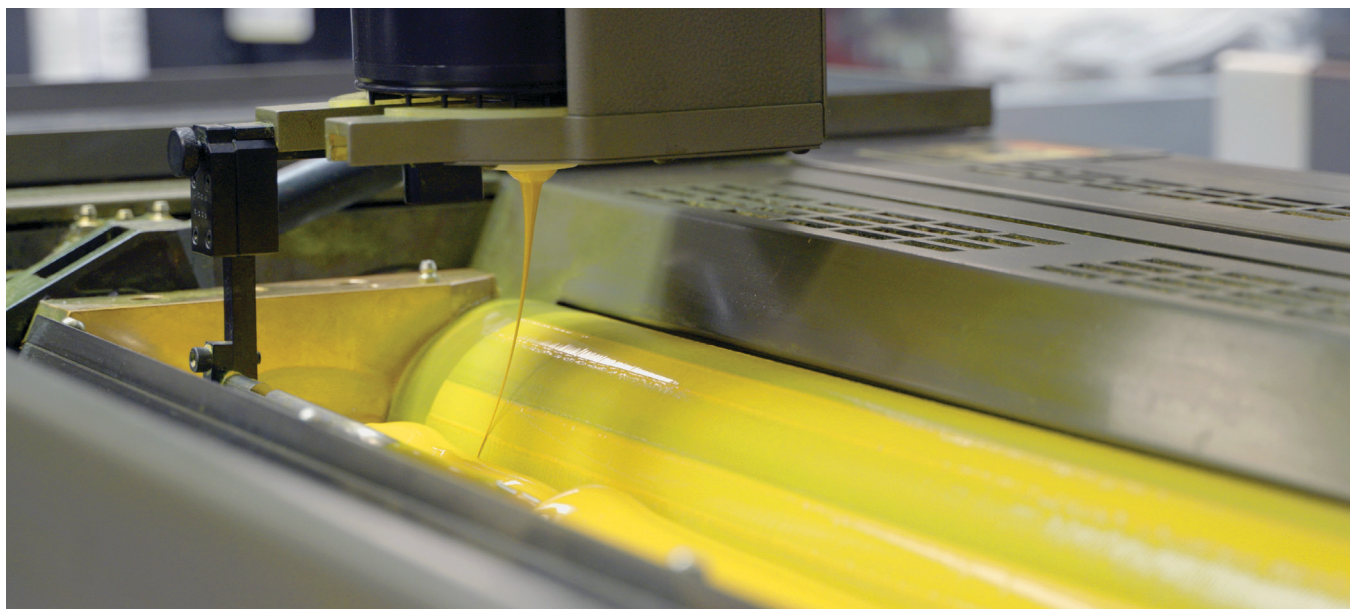
# Designed for Operation. Engineered for Performance.

The Sentinel Ink Management System is a globally trusted solution with thousands of installations worldwide, designed to optimize ink usage and enhance efficiency on all major sheetfed offset presses.



## Key features

- High intensity LED low or empty warning lights are visible from any angle.
- Trouble free installation on new presses or easy field upgrade on existing presses.
- Sealed linear actuator provides clean, low maintenance environment.
- Belt drive with stepper motor ensures years of smooth, trouble free operation.
- Flexible control display can be positioned to either the operator or non-operator side of the press.
- Durable extruded and cast metal construction.



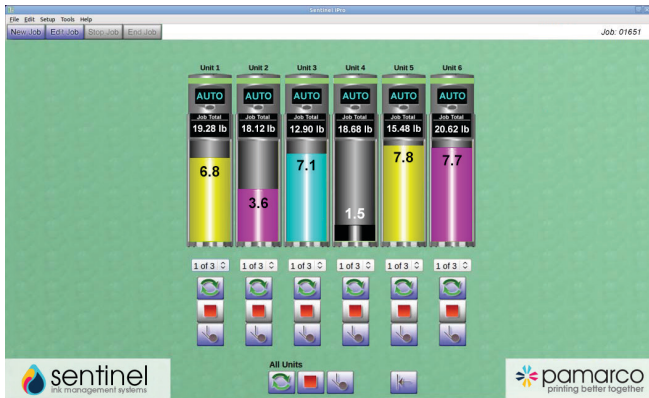


# No press problems. Just Press Solutions.



## MONITORING & REPORTING

Tracks and stores individual job details and totals for future reference. Generates end-of-job reports to support accurate repeat run estimates.



## COLOR CONSISTENCY

Eliminate virtually all rejects from poor color consistency. Sentinel delivers a consistent bead of ink, and eliminates the change in color density, giving you consistency from sheet 1 to 10,000.



## REDUCED INK COSTS

Generate savings of up to 25% in your ink costs through reduced wastage. Sentinel leaves less than 2% residual ink in the cartridge.



## INCREASED PRODUCTIVITY

Significantly reduce your clean-up and make-ready times, meaning less downtime, increased efficiency, and a cleaner press environment.

## Function and Monitoring Features

- Manages individual or multiple Sentinel units, including auto run, stop, and plow (agitate) modes.
- Controls fountain filling and levels directly from the console.
- Tracks ink usage and remaining ink, with real-time updates and end-of-job reporting, including low and empty cartridge alerts.

## Job Recording Features

- Tracks and saves individual job details and totals for future reference.
- Allows precise ink usage tracking by setting specific gravity or weight, with end-of-job reports for estimating repeat runs.
- Exports data to and from ERP systems to optimize ink purchasing and management.



## OPTIMIZING LABOR COSTS

Optimize your labor costs. It takes less than 30 seconds to load a Sentinel cartridge, which will then run unmonitored until it needs replacing.



## REDUCING WASTE COSTS

Reduce your waste disposal costs by up to 85% by minimizing the amount of ink and materials discarded during the printing process.

## Accepts all inks

The Sentinel Ink Management System accepts automated cartridges from **all ink vendors** in both 8 Lb. and 2 Kg. sizes as well as the RemoteLinc™ Bulk Pumping Adapter.

FlintGroup

hubergroup

INK  
SYSTEMS  
INC.

INX

SunChemical  
a member of the DIC group

TopLevel  
Printing Ink, Inc.

TOYO INK

WikoffColor  
CORPORATION

# How can we help you?

## Lets talk ink savings.



”

The Ink Sentinels are a huge difference maker,  
they've saved our guys countless hours on press.

**Kent Tucker**

Executive Vice President - Tucker Castleberry  
Komori Lithrone G40P

# KOMORI

**David Doucette**  
Director of Sales  
972.839.0347  
david.doucette@pamarco.com



3333 Earhart Dr, Suite 140 | Carrollton, TX 75006 | +1 973.839.0347 | [inksentinel.com](http://inksentinel.com)

The Sentinel Ink Management System is a globally trusted solution with thousands of installations worldwide.